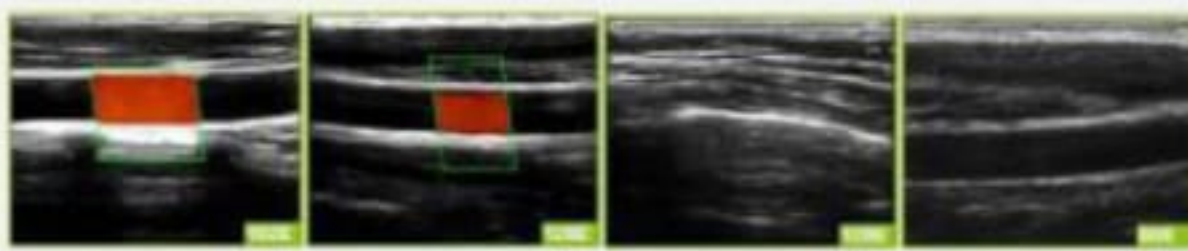


SONORAY LINEAR USB PROBES



A New Generation of Medical Tool

A doctor must sharpen his tools before he can do good



Specification:

- Scanning mode: Electronic array
- Display mode: B, B/M, color doppler version with B+Color, B+PDI, B+PW (Probe dependent)
- Probe element: 80/128/192 (depends on type)
- Probe frequency and scan depth, head width:
Linear head 7.5MHz/10MHz, 20/40/60/100mm, 40mm
Small Linear head 10MHz/14MHz, 20/30/40/55mm, 25mm
- Image Adjust: B-Gain, TGC, DYN, Focus, Depth, Harmonic, Color Gain, Steer, PRF
- Cine play: auto and manual, frames can be set
- Puncture assist function: Available
- Measure: Length, Area, Angle, heart rate
- Image save: JPEG & AVI
- Image frame rate: 18 frames / second
- Battery working time: 3~5 hours
- Battery charge: by USB charge or wireless charge
- Dimension: 156×60×20mm
- Weight: 220g~250g
- Working system: Apple iOS and Android, Windows

